



# Inter-Lutheran Theological Seminary

914 Pine Street, PO Box 449, Hancock, MI 49930 • (906) 482-3337 • [www.ilseminary.org](http://www.ilseminary.org)

a Minnesota Corporation

June 2014,

Dear Friends,

I beseech you therefore, brethren, by the mercies of God, that ye present your bodies a living sacrifice, holy, acceptable unto God, *which is* your reasonable service. (Romans 12:1 KJV)

After Paul's thoughts concerning his desire for the salvation of the Jewish people and how Gentile Christians have been "grafted in" in Christ with his appeal that they fulfill their calling to bring the Gospel to their Jewish neighbors, followed by a wonderful doxology, Paul begins his next set of thoughts with the above exhortation. The Apostle is clearly encouraging his fellow believers to begin practicing the desire of God (that he mentioned earlier in the epistle) that His people have a Gospel-oriented approach to everyone. It's God's compassion that should motivate their behavior, first regarding themselves and then to those around them. A compassionate God sent His only Son as a sacrifice of death to save humanity, now He calls us to be a "living sacrifice", a sacrifice made alive in Christ that may now impart that life to others in the sharing of the Gospel and walking in the life of Christ. This sacrifice is now the only consecrated sacrifice that may now be offered to God to His satisfaction. We cannot do anything for God but we may be yielded instruments by which He will do what He wants in us. Then comes Paul's well-known but often poorly understood conclusion; "which is your reasonable service." What exactly is "reasonable service"?

The Greek word rendered "reasonable" in the KJV comes from the same root as logos (word in Greek), it is the source of the word logic and could readily be translated "logical". The word rendered as "service" is employed in the New Testament as a word for "worship", serving God by showing worth to Him. The phrase; "which is your reasonable service" could readily be translated "your logical act of service in worship". This statement reflects the logic of the entire New Testament voiced by Christ in John 20:21 (as my Father hath sent me, even so send I you) and lived out by the disciples in Acts and the balance of the epistles. Christ came to serve and sent us out to do the same (John 13). We are a sacrifice to God to reflect God's sacrifice for us sent out to minister the finished work of Jesus Christ to those around us. That is our "reasonable service" or our "logical act of service in worship".

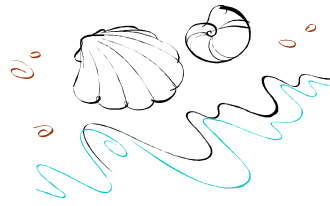
This isn't consistent with the way of our world however. The world is full of selfish ambition and people within it often seek for themselves first, then, if they can derive benefit from it will begin to serve others. For this reason Paul appended; "And be not conformed to this world: but be ye transformed by the renewing of your mind, that ye may prove what is that good, and acceptable, and perfect, will of God. (Romans 12:2 KJV) The act of service is a Christ-like act; it cannot originate from the world, only God's transforming renewal by the Holy Spirit can bring about a new behavior. This has been the teaching of Christianity from its inception; we are here to serve everyone so that they would come to the know God as revealed in Christ.

I have been involved in the work of this seminary and in our church federation (with but one brief hiatus) since 1979. During that time I have constantly witnessed the work of servants. In fact, I have been surrounded by them. People that have dedicated, and many have given, their lives for service to the Good News of Jesus Christ. I have received so much benefit from them that my debt is inestimable. All I can do is feebly attempt to imitate their example. People will often ask me why it is I stay here, I can freely say because I have been so blessed and God has given me a place to serve. There are many around us who could have chosen a different pathway and perhaps received great recognition in the world but they chose to follow Romans 12:1 and serve. Many of you who could give or employ your resources and talents in other venues continue to serve us through your kindness for which we are endlessly grateful.

Still we continue to seek out servants. We look for those willing to hearken to God's call and come join us in service. We look for those willing to engage the world with the Gospel and dedicate themselves to God's purpose. We look for those who understand Romans 12:1,2 and continue to pray that God will send them.

May God bless you for your continuing love and support for us. All of us are together united in His service.

God's Peace,  
Jay Weidner



## *Donations Received...*

### *In memory of Kathy Forsman*

from Scott & Karen St. Peter  
Ernest Bylkas III, Joy & family

### *In memory of Norman Ruohonen*

from Betty Ruohonen

### *In memory of H Dean Hoard*

from Dan Hoard & family

### *In memory of Luella Johnson*

from Willie Johnson

### *In memory of Winifred Syria*

from Willie Johnson

### *In memory of Paul Paana*

from Elmer & Luella J. Puumala

### *In memory of Gerald L. DeMotts*

from Myra DeMotts

### *In memory of Linda Weidner*

from Jeff Weidner

### *In memory of Theresa Weidner*

from Jeff Weidner

### *In memory of W.E. Weidner*

from Jeff Weidner

### *In memory of Ernest Bylkas Jr.*

from Ernest Bylkas III, Joy & family



*Thank you to all who attended the Seminary Spring Sing service on May 18th. The students, staff and local musicians took part in this service and it was enjoyed by all. Approximately \$1,400 was raised to help carry on the work and teaching of the Seminary. God Bless your generosity!!*



## **HERE'S ANOTHER WAY YOU CAN HELP THE SEMINARY**

The Inter-Lutheran Seminary has created an endowment fund so that our supporters may make gifts that will provide ongoing support. Our Endowment Fund is designed to preserve the principal and a portion of the earnings, and use the remainder of the earnings to fulfill our mission. Because only a portion of the annual earnings on our Fund is used each year, the Fund continues to grow, buffering the Fund against inflation and providing a permanent source of support to our mission.

The Fund is located at the InFaith Community Foundation (formerly Lutheran Community Foundation), based in Minneapolis, Minnesota. The Foundation is dedicated to supporting the charitable, religious and educational purposes of Lutheran congregations, institutions and communities, and benefiting society in general. It offers individuals and organizations the opportunity to create permanent charitable funds to benefit the charities and causes representing their diverse interests and concerns. At the Foundation, our endowment fund will be invested for long-term appreciation. Only a part of the income from the fund will be available to be spent each year; the remaining income will stay in the fund to build a buffer against inflation and future market fluctuations. One the many advantages of this relationship is that our donors may work directly with the Foundation to achieve their charitable goals and remain anonymous.

We invite you to participate in supporting the endowment. You may make gifts during life or at death. If you would like to learn more about the purpose of the endowment and ways you may give, please visit <http://www.infaithfound.org/ilseminary>.

